

# DRINKS MENU



We ask that foods from home are not consumed

Please keep food and drink separate from play and games to protect those with allergies

As well as local suppliers we use Suma and Greencity who stock Fairtrade and ethical products



## Speciality Loose Leaf Teas

- Breakfast teapig £2.60
- Decaffeinated teapig
- Chai teapig
- Green teapig
- Blood orange
- Camomile teapig
- Earl Grey teapig
- Peppermint teapig
- Strawberry garden

Or try a 'Dirty' Chai  
with an espresso shot!

### Turmeric chai

A warming blend of turmeric, cinnamon and ginger  
infused in the milk of your choice

## Cold Brew Tea

- Strawberry Lemonade £2.80  
*A fruity infusion*
- Peach Soda  
*The perfect peach soda pop*
- Pina Colada  
*Coconut, pineapple, lemongrass & rose*
- Eaton Mess  
*Strawberries, meringue and cream*
- Lemon Sherbet  
*Sweet and fruity, bursting with lemon*
- Jasmine Pears  
*Jasmine Sencha with fruity pear*

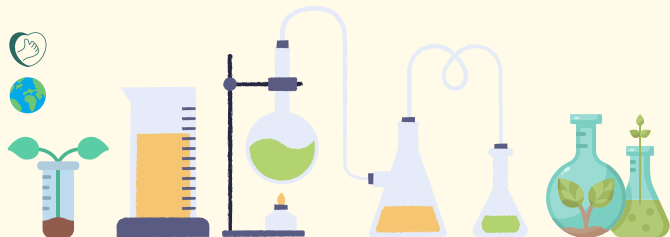
## Chilled Drinks

- Highland Spring sparkling water £1.10
- Belvoir sparkling lemonade £1.95
- Belvoir sparkling raspberry £1.95
- Belvoir sparkling elderflower £1.95
- Organic fairtrade Karma cola £1.95
- Karma orangeade £1.95

## Kids Drinks

- Pip apple carton £1.40
- Pure Orange carton £1.10
- Pip blackcurrant carton £1.40
- Pip smoothie carton £1.40
- Strawberry frappe £2.50
- Banana frappe £2.50
- Dairy milk £0.20
- Dairy free milk £0.50
- Hot chocolate £2.80
- Babyccino £0.20
- Chocolate babyccino £0.20
- Non-Dairy Milk 0.50p





# The Drinks Lab

Playtime for the grown ups!

## 1. Base Solution

	Dairy
£0.50	Oat
£0.50	Soya
£0.50	Almond
£0.50	Coconut

## 2. Add some Flavour

£0.60

Vanilla
Cherry
Biscoff
Nutella
Caramel
Hazelnut
Chocolate
Peppermint
White chocolate

*Additional seasonal or special syrups may be available*

## 3. What's your Style?

### Coffee

£2.60

Americano	Espresso with hot water
Espresso	Single shot coffee

£2.80

Latte	Espresso with steamed milk
Cappuccino	Espresso with steamed milk & foam
Flat White	Espresso 1: 3 with steamed milk
Doppio	Double shot coffee
Macchiato	Single shot topped with foam
Cordato	Single shot 1:1 with steamed milk



## Van Houten Hot Chocolate & Cold Frappes

£3.00

Milk	Smooth and well balanced with hints of vanilla
Dark	Intensely dark with roasted tones
White	Smooth and creamy with notes of caramel
Golden	Caramel with hints of vanilla

## Marvellous Hot or Cold Creations!

£3.60

Snowball	White chocolate made with coconut milk
Chili dark	Dark chocolate with a chili for delicious heat
After dark	Dark chocolate with mint flavour
Lucky Green	White chocolate with mint flavour
Flipped mocha	Milk chocolate with an espresso
Naughty Nutella	Milk chocolate blended with Nutella
Golden mochaccino	Caramel chocolate with an espresso
Chocolate madness	Shot of dark chocolate topped with white chocolate
Black forest gateau	Dark chocolate with cherry purée
Biscoff gingerbread	Milk chocolate with Biscoff for a gingerbread flavour
Chili dark mochaccino	Dark chocolate with espresso & a chili pepper

## 4. Add a sprinkle of fun

Cream £0.50

Flake £0.50

### Deliciously Complimentary:

Mini marshmallows
Cinnamon dusting
Chocolate dusting
Rainbow sprinkles
Coconut sprinkles
Biscoff sprinkles
Nutmeg dusting





# Play Rules



Designed so that play can be safe and fair for all. We have developed these with ROSPA, in line with our risk assessments and insurance company policy.

**We DO NOT recommend running in the café area**  
**We recommend wearing shoes in all areas other than the main play**

## General

Max age 8

Play must be supervised at all times

Carers are responsible for children's safety and behaviour

Carers must stay with children in the playrooms at all times

No photography/videos unless you have permission of all in shot

Booked end times must be adhered to

Booked time **INCLUDES** café time

## Allergen Safety and Infection control

Strictly no food or drinks in the play areas

*For cleanliness and allergen control.*

*Please also consider games and books with regard to this.*

Food from home is not permitted

*If your child has complex allergies and food from home, you **MUST** let us know for allergen control purposes*

Socks must be worn by all

*To prevent the spread of foot infections and children getting friction burns on slides*

Allow 48hrs after sickness/ diarrhoea before attending a play session

## Physical Safety

Use the entry ways and **DO NOT** allow children to jump fences/posts

No hard items in the main play area

Blue construction kit is for building and should stay in the studio. No hitting.

Playroom toys should be kept in the play room for all to enjoy



# Snacks Menu



We are dependent upon café sales and ask that foods from home are not consumed  
Please remember that foods are allergens and need to be separated from play and games  
As well as local suppliers we use Suma and Greencity who stock Fairtrade and ethical products

gf = gluten free  
df = dairy free  
ve = vegan

Allergies must be made known to staff



## Treehouse Platters

Any 5-7 items

5 items for £5.50

£0.50 for additional items

(\*extra £0.10p)

Carrots – Peppers – Cucumbers – Tomatoes – Grapes –  
Apples – Banana – Tangerine – Ham – Boiled egg –  
Cheddar (milk) – Humous (sesame) – Peanut butter  
(nuts) – Oat Cakes (wheat) – Breadsticks (wheat) –  
Pitta (wheat)

For the big kids\*: Sun-blashed tomatoes – artichokes –  
mature cheese (milk) – honey smoked ham – Feta (milk)

## Kids Sandwiches

1 Filling: £4.00, 2 Fillings: £4.30

Ham (df)

Cheese (milk)

Egg Mayonnaise (egg, df)

Humous & Cucumber (ve)

Butter – DF Spread – Humous

White bread – 50/50 – Wholemeal bread –

GF Wrap

Served with cucumber & tomato garnish

## Big Kids Sandwiches

1 Filling: £4.50, 2 Fillings: £4.70 3 Fillings £4.90

Honey Roast Ham (df)

Mature or Mild Cheese (milk)

Egg Mayonnaise (egg, df)

Humous/Cucumber (sesame, ve)

Sandwich Pickle

Fruit Chutney

Humous or Spicy humous (sesame)

Wholegrain or French mustard

DF Spread – Humous/Spicy Humous (sesame) – "Marmaise" (celery)

White – 50/50 – Wholemeal bread – Pavini – GF Wrap

Served with leaves and nacho chips garnish

*This is a Treehouse  
invention with a spot of  
marmite in mayonnaise.  
Amazing!*

## Toasted Treats

£2.20

Teacake – Crumpets – Toast – GF toast  
(gluten, wheat, soy, egg)

Butter (milk) or spread (df) £0.3

Jam – Honey – Marmalade, Marmite (celery) – Nutella (nuts,  
milk) – Biscoff (wheat) – Peanut Butter (nuts) – Humous  
(sesame) £0.6

## Ice Creams

Chocolate – Vanilla – Mint Choc – Strawberry

(milk) £2.0

Vegan Raspberry £2.20

Bear lollipop Mango or Strawberry £0.85

Add a shot of coffee over your  
ice cream...voila! Affogato!

## Yeo Yoghurts

(Milk) Peach – Blackcurrant –

Strawberry – Raspberry